



MONTCLAIR STATE
UNIVERSITY

Montclair State University

Montclair State University Digital
Commons

2017-2018 Women Innovators in the
Performing Arts

PEAK Performances Programming History

12-16-2017

Shanghai Quartet with Yiwen Lu

Office of Arts + Cultural Programming

PEAK Performances at Montclair State University

Follow this and additional works at: <https://digitalcommons.montclair.edu/peak-performances-2017-2018>



Part of the [Music Performance Commons](#), and the [Theatre and Performance Studies Commons](#)

Recommended Citation

Office of Arts + Cultural Programming and PEAK Performances at Montclair State University, "Shanghai Quartet with Yiwen Lu" (2017). *2017-2018 Women Innovators in the Performing Arts*. 6.
<https://digitalcommons.montclair.edu/peak-performances-2017-2018/6>

This Book is brought to you for free and open access by the PEAK Performances Programming History at Montclair State University Digital Commons. It has been accepted for inclusion in 2017-2018 Women Innovators in the Performing Arts by an authorized administrator of Montclair State University Digital Commons. For more information, please contact digitalcommons@montclair.edu.



Quartet-in-Residence

Shanghai Quartet with Yiwen Lu, erhu

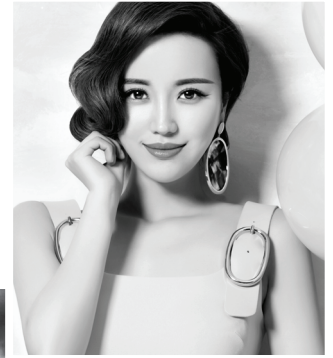


Photo credit: Xuejun Zhang

December 16, 2017 • 8:00pm

Alexander Kasser Theater

Arts + Cultural
Programming



MONTCLAIR STATE
UNIVERSITY

Dr. Susan A. Cole, President
Daniel Gurskis, Dean, College of the Arts
Jedediah Wheeler, Executive Director, Arts & Cultural Programming

Quartet-in-Residence

Shanghai Quartet

Weigang Li, violin

Yi-Wen Jiang, violin

Honggang Li, viola

Nicholas Tzavaras, cello

Guest Artist

Yiwen Lu, erhu

Program

String Quartet No.1 in E-flat Major, Op.12

Felix Mendelssohn (1809–1847)

I. Adagio non troppo – Allegro non tardante

II. Canzonetta: Allegretto in G minor

III. Andante espressivo

IV. Molto allegro e vivace

***Little Cabbage*, for String Quartet and Erhu**

Wen Deqing (b. 1958)

Chinese Folk Songs for String Quartet and Erhu

arr. Yi-Wen Jiang

“Reflection of the Moon in Ee-Qian Fountain”

Yan Jun Hua (1893–1950)

Zuqiang Wu (b. 1927)

“Yao Dance”

Yuan Mao (b. 1926)

Tieshan Liu (b. 1963)

~~Intermission~~

“Agony”

Liu Tianhua (1895–1932)

“Bird Calls in the Mountain Valley”

Liu

Erhu Capriccio No. 5, for String Quartet and Erhu

George Gao (b. 1967)

Fiddle Suite for String Quartet and Erhu

Chen Yi (b. 1953)

I. Singing

II. Reciting

III. Dancing

Duration: 90 minutes, including one 15-minute intermission.

In consideration of both audiences and performers, please turn off all electronic devices. The taking of photographs or videos and the use of recording equipment are not permitted. No food or drink is permitted in the theater.

About the Artists

Shanghai Quartet

Renowned for its passionate musicality, impressive technique, and multicultural innovations, the Shanghai Quartet has become one of the world’s foremost chamber ensembles. Its elegant style melds Eastern music with Western repertoire, traversing musical genres from folk music to great masterpieces to cutting-edge contemporary works.

Formed in 1983, the Quartet regularly tours the major music centers of Europe, North America, and Asia, from the international music festivals of Seoul and Beijing to the Festival Pablo Casals in France and the Beethoven Festival in Poland. The Quartet has appeared at Carnegie Hall and Lincoln Center. They have collaborated

with the Tokyo, Juilliard, and Guarneri Quartets; cellists Yo-Yo Ma and Lynn Harrell; pianists Menahem Pressler, Yuja Wang, Peter Serkin, and Jean-Yves Thibaudet; and pipa virtuoso Wu Man. They have been regular performers at North America's leading chamber music festivals, including the Santa Fe Chamber Music Festival and Maverick Concerts.

The Quartet has a history of championing new music. Its 30th-anniversary season brought new works from David Del Tredici, Carl Vine, Jeajoon Ryu, Lei Liang, and Robert Aldridge. Their 25th-anniversary season featured Penderecki's String Quartet No. 3: *Leaves from an Unwritten Diary* and Chen Yi's *From the Path of Beauty*, commissioned with Chanticleer. The Penderecki premiered at the composer's 75th-birthday concert in Poland and was featured again at his 80th-birthday celebration in 2013. *From the Path of Beauty* premiered in San Francisco, followed by performances at Tanglewood, Ravinia, Beijing, and Shanghai. Other recent premieres include works by Bright Sheng, Zhou Long, Du Yun, Zhao Lin, and William Bolcom.

The Shanghai Quartet has an extensive discography of more than 30 recordings, including *Chinasong*, a collection of Chinese folk songs arranged by Yi-Wen Jiang. The complete Beethoven String Quartets can be heard on Camerata, released in 2009. Media projects range from an on-screen appearance in Woody Allen's *Melinda and Melinda* to PBS television's *Great Performances*. Weigang Li appeared in the documentary *From Mao to Mozart: Isaac Stern in China*, and the family of Nicholas Tzavaras was the subject of the film *Music of the Heart*. The Quartet is the subject of a documentary film, *Behind the Strings*, currently in production.

The Shanghai Quartet is Quartet-in-Residence at the John J. Cali School of Music at Montclair State University, Ensemble-in-Residence with the Shanghai Symphony Orchestra, and visiting guest professors of the Shanghai Conservatory and the Central Conservatory in Beijing. They are sponsored by Thomastik-Infeld Strings.

Yiwen Lu

Lu Yiwen earned her bachelor's and master's degrees from the prestigious Shanghai Conservatory of Music. She was admitted to the primary school affiliated with the Shanghai Conservatory of Music at the early age of nine, having won first placement

in performance in 2000. Later she was directly admitted to the Conservatory's highly selective affiliated middle school based on her excellent performance ability. Lu Yiwen was admitted to university in 2009 and studied under Chen Chunyuan, after which she began to study for a master's degree in 2013. During her study, Lu Yiwen began working with the master Min Huifen.

Lu Yiwen won the New Top Performers in China Award in 2014, and Excellent New Artist Performance Prize in the 32nd annual Shanghai Spring International Arts Festival in 2015. She was invited to visit Egypt with Chinese President Xi Jinping in 2016 to participate in the opening ceremony performance in Sino-Egypt Culture Year 2016, a conference encouraging dialogue between the two civilizations. Lu Yiwen has delighted audiences around the world with her excellent musicianship and performances, performing as a soloist with the internationally acclaimed Taipei Chinese Orchestra, Shanghai Symphony Orchestra, Taiwan Guangyi Symphony Orchestra, Qingdao Symphony Orchestra, Shanghai Chinese Orchestra, Liège Royal Philharmonic Orchestra, Frankfurt Radio Symphony Orchestra, Israel Modern Orchestra, Jiangsu Chinese Orchestra, and Jilin Chinese Orchestra, among others. Lu Yiwen has also performed in exchanges in Germany, Switzerland, Austria, Belgium, Israel, Japan, Egypt, Taiwan, and Hong Kong, all to great acclaim.

Staff

Office of Arts & Cultural Programming

Executive Director **Jedediah Wheeler**

Executive Producer **Jill Dombrowski**

Business Manager **Stephanie Haggerstone**

Production/Facility Manager **J. Ryan Graves**

Cultural Engagement Director **Carrie Urbanic**

Media and Marketing Director **Amy Estes**

Director of Audience Services **Robert Hermida**

Program Administrator **Brett Wellman Messenger**

Technical Director **Colin Van Horn**

Audio Visual Engineer **Erik Trester**

Master Stage Electrician **Andrew R. Wilsey**
Box Office Manager **Jeffrey Wingfield**
Cultural Engagement Assistant **Hannah Rolfes**
Media and Marketing Assistant **Melissa Bilecky**
House Manager **Maureen Grimaldi**
Graphics **Patrick Flood/Flood Design**
Press **Blake Zidell & Associates**
Program Editor **Susan R. Case**
Program Design **Bart Solenthaler/Bart&Co.**
Production Run Crew **Christopher Ollo**
Program Assistant **Ava Deutch**

College of the Arts

Dean **Daniel Gurskis**
Associate Dean **Ronald L. Sharps**
Assistant Dean **Linda D. Davidson**
Director of Administration **Marie Sparks**
College Administrator **Zacrah S. Battle**
Art and Design **Livia Alexander**
John J. Cali School of Music **Jon Robert Cart**
School of Communication and Media **Keith Strudler**
Theatre and Dance **Randy Mogleston**
Broadcast and Media Operations **Nick Tzanis**
University Art Galleries **Teresa Rodriguez**

The **Office of Arts & Cultural Programming** (ACP) enhances the cultural, creative, and academic life of the Montclair State campus and the broader community. Its signature program, Peak Performances, features innovative works by international contemporary artists of exceptional merit, and by the next generation of great artists training at Montclair State University's College of the Arts. Through its Cultural Engagement program, ACP offers master classes, workshops, lectures, and discussions designed to deepen participants' understanding of the aesthetic, cultural, and social contexts of the performances presented.

ACP gratefully acknowledges our student staff and volunteers:

Peak Ambassadors **Brian Lanigan, Emily Leddy, Waverley Leung,
Hailey Nichols, Lauren O'Brien**

Assistant House Managers **Zsaira Davis, Steven Ruiz**

Box Office Representatives **Alexis Amore, Jamie Bacher, Jose Baez,
Peace Biyibioku, Carrie Bohn, Nicole Casey, Lydia Dlugosz, Noelle Florio,
Ameer Gonzalez, Georgia Ikeachumba, Kaitlyn Karlstein, Duha Tahboub,
Angelica Ubiera, Tashae Udo, Cierra Williams**

Ushers **Carlos Andrade, Joshika Andersson, Beatrice Bermudez,
Michael Borrás, Ariadna Camayo, William Collins, Tatiana Copeland,
Dominic Croce, Andrew DeSisto, Lisa Devereaux, Jenna Eberhardt,
Dana Galassa, Yarixa German, Cesar Gonzalez, Adriana Guerrero,
Valerie Jaretsky, Azariah Johnson, Jonathan Johnson, Andre Lebron,
Waverley Leung, Gabriel Lillianthal, Jeffrey McClellan, Ivy Meyer,
Brooke Olsen, Joseph Respicio, Angela Rosado, Carol Rotella,
Andrew Russel, Therese Sheridan, MaryRose Spinella, Templar Wright,
Journie Zarate**

Programs in this season are made possible in part by funds from:

The National Endowment for the Arts



The New Jersey State Council on the Arts, a partner agency of the National Endowment for the Arts



New England Foundation for the Arts' National Dance Project, with lead funding from the Doris Duke Charitable Foundation and The Andrew W. Mellon Foundation



Mid Atlantic Arts Foundation



Peak Patrons: Mark Adamo, Adam Adams, Linder Andlinger, Joseph Canderozzi, Julie Cerf, Kara Cross, Alison and James T. Cirenza, Joanna Conrad, Alyce Dissette, Elisabeth Gitelle, Brian McDonough, Frank Niccoletti, Michael Peroff, Rebecca Sager, Martin Wechsler

To view our complete season and for more information, visit peakperfs.org.

Find us on 

 @peakperfs

 @peakperfs