



Nov 12th, 10:00 AM

Racial Justice and Black Lives in Research: Consider these areas of inquiry

Doretha Walker
dwimages46@gmail.com

Amy Krenzer
Montclair State University, krenzera@montclair.edu

Hila Berger
Montclair State University, bergerh@montclair.edu

Michael A. Hunt
University of Maryland - Baltimore County, michaelahunt@umbc.edu

Follow this and additional works at: <https://digitalcommons.montclair.edu/blminresearch>



Part of the [Education Commons](#), [Medicine and Health Sciences Commons](#), and the [Social and Behavioral Sciences Commons](#)

Walker, Doretha; Krenzer, Amy; Berger, Hila; and Hunt, Michael A., "Racial Justice and Black Lives in Research: Consider these areas of inquiry" (2020). *Black Lives Matter in Research*. 5.
<https://digitalcommons.montclair.edu/blminresearch/2020/Presentations/5>

This Event is brought to you for free and open access by the Conferences, Symposia and Events at Montclair State University Digital Commons. It has been accepted for inclusion in Black Lives Matter in Research by an authorized administrator of Montclair State University Digital Commons. For more information, please contact digitalcommons@montclair.edu.



MONTCLAIR STATE
UNIVERSITY

Montclair State University
**Montclair State University Digital
Commons**

Black Lives Matter in Research

2022

Nov 1st, 12:00 AM

BLM in Research Ethics

Doretha Walker
dwimages46@gmail.com

Amy Krenzer
Montclair State University, krenzera@montclair.edu

Hila Berger
Montclair State University, bergerh@montclair.edu

Michael A. Hunt
University of Maryland - Baltimore County, michaelahunt@umbc.edu

Follow this and additional works at: <https://digitalcommons.montclair.edu/blminresearch>



Part of the [Communication Commons](#), [Education Commons](#), [Law Commons](#), [Library and Information Science Commons](#), and the [Medicine and Health Sciences Commons](#)

Walker, Doretha; Krenzer, Amy; Berger, Hila; and Hunt, Michael A., "BLM in Research Ethics" (2022). *Black Lives Matter in Research*. 1.
<https://digitalcommons.montclair.edu/blminresearch/2022/presentations/1>

This Event is brought to you for free and open access by the Conferences, Symposia and Events at Montclair State University Digital Commons. It has been accepted for inclusion in Black Lives Matter in Research by an authorized administrator of Montclair State University Digital Commons. For more information, please contact digitalcommons@montclair.edu.

Researchers, Ethics & IRB Professionals:

Racial Justice and Black Lives in Research: Consider these areas of inquiry –

- Developed by the Black Lives Matter in Research Working Group 2021 - Researchers, Ethics & IRB Professionals

01 Community Engagement



How do you engage the community ?

- Identify barriers to community participation, including fear
- Seek community stakeholders who benefit from participation
- Plan ways to return findings to the community in a meaningful way
- Create ongoing communication strategies, including centering black voices.
- E.g., if we're talking about lived experiences of Black women in their bodies, methods better leave room for Black women to express that.

02 White Normativity



How do you plan to assess white normativity in Research Design?

- Assess demographic question's added value to research design.
- Extend the latitude of what is researchable (research versus methodology).
- Evaluate the uniformity in data reporting and limit interference in non-uniform research design.
- Explore epistemologies or methods are limited based on "standard" set by institution.
- E.g. If the methodologists are all white how do we encourage and facilitate BIPOC methodologists

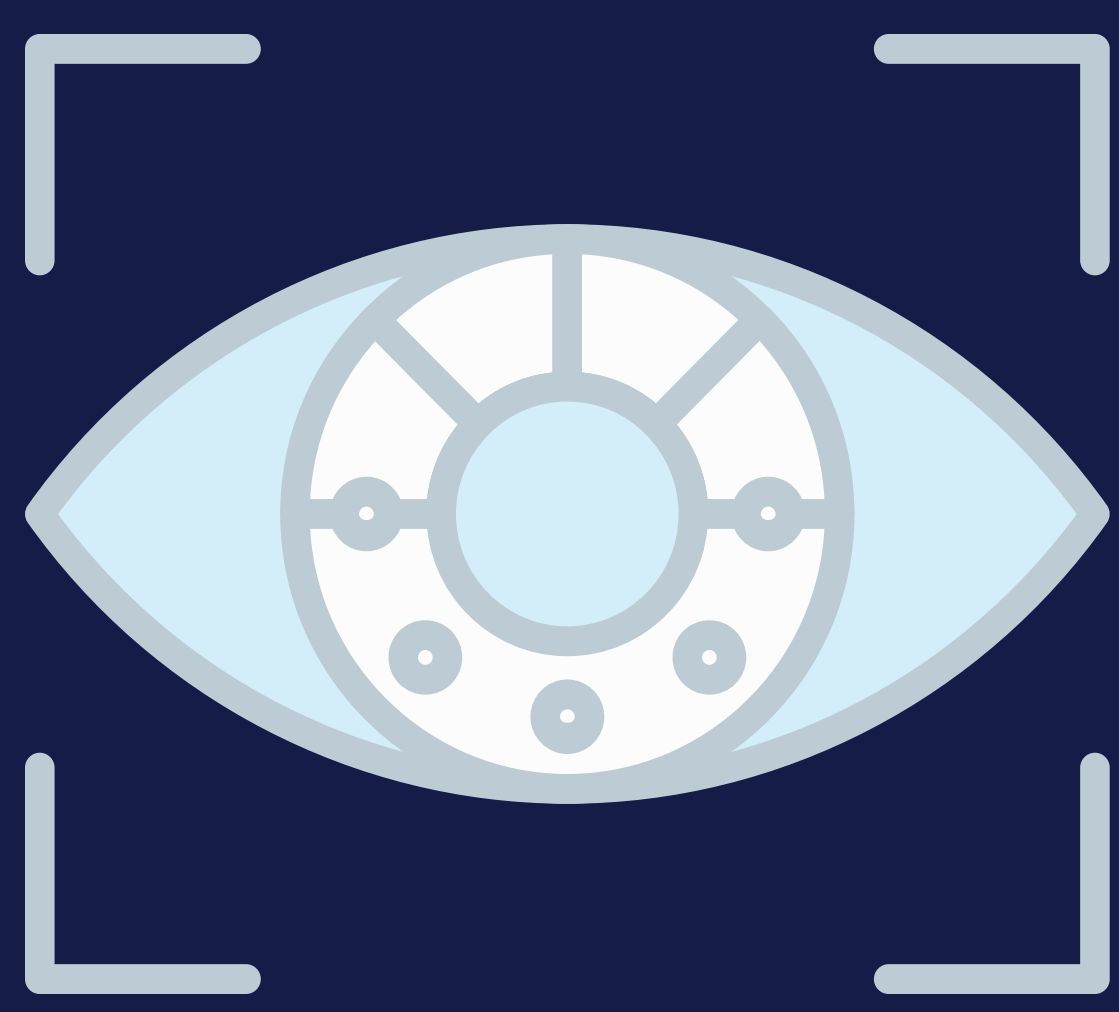
03 Participant Lived Experiences



How do researchers incorporate participant's lived experiences?

- Acknowledge the effects of lived and historical trauma, do not make assumptions
- Speak about lived experiences with compassion and sensitivity.
- Acknowledge and validate the connection between trauma and health in the experiences of Black folk.
- Center the joy, celebration, innovation, and genius of Black communities, Black families, and Black parents (e.g., in field of education).
- Prioritize Black or BIPOC communities' input and recruitment into therapeutic research for conditions which their community is most stricken.

04 Awareness



What is the level of awareness amongst IRB members and researchers?

- Honor and promote recognition of research on Black Lives. Recognize that internalized racism and bias can exist among Black researchers and IRB professionals.
- Recognize that POC researchers are often trained in white, cis male spaces.
- Assess diversity and inclusion of research teams. Has research been grounded in the knowledge and experience of the community (emic vs. etic approach)?
- Actively assess the cultural appropriateness of methods (data collection strategies, tests, interviews) and request adjustments accordingly

05 Training and Education



What additional considerations might you make for training and education?

- Provide multicultural teaching and mentoring across all systems.
- Train IRB members with consideration of diversity in research teams.
- Train research teams in:
 - cultural competence
 - sound practices for community engagement
 - methodologies best suited for all participants and communities

06 Publication and Access



What additional considerations might you think about for publication and access to data?

- Consider the importance of information from a diversity of sources, not just "top-tier" journals. Recognize the value and make other resources available, create institutional change regarding what publications are valued.
- Consider high-quality research that uses a range of methods, uses alternate ways of understanding, and presents alternate theories besides mainstream journals that might have limited inclusivity.
- Encourage open access research and research repositories.
- Evaluate research objectives for participant support and what can be returned to them.
- Revisit that question to find which journals to publish to, which projects to pursue, how to pursue them.
- Promote research that supports and uplifts participants in some way.
- Do not allow "Gatekeeping" in funding and publication.
- E.g. if a funder is not inclusive do not use the justification "the funder approved this study design" as ethical.

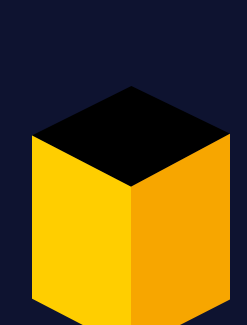
07 IRB Composition and Committees



What considerations should be made for IRB Composition?

- Representation and composition on IRBs should reflect the community; including racial representation and research representation.
- Commit to time limits for IRB terms.
- Require transparency in the selection process.
- IRB focuses on community advocacy (versus liability control.)

<https://www.montclair.edu/institutional-review-board/blminresearch/>
Created in collaboration with individuals attending the November 2020 symposia and compiled by the Working Group.



Black Lives Matter
in Research
Working Group

Dr. Doretha Walker, Independent Scholar
Michael Hunt, UMBC
Amy Krenzer, MSU
Hila Berger, MSU